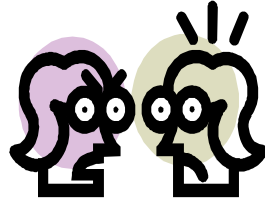


On The Level

NATIONAL ASSOCIATION OF WOMEN IN CONSTRUCTION
BLUEGRASS CHAPTER #367, LEXINGTON, KENTUCKY

Thursday, March 18th – Dispute Resolution

March, 2010



Ever find yourself amidst the world's largest game of "he said...she said?" How often do you stare at the ceiling instead of sleeping peacefully replaying the heated discussion you had earlier with an employee? Has the economy put you in a tight spot as you find no alternative but legal action to collect monies owed to you? On March 18th you'll have the chance to hear from industry experts such as Chauncey Davis, Vice President of the American Arbitration Association about dispute resolution tips. In addition, you'll have the opportunity to learn priceless communication tactics to help you turn the time you spend arguing into time you spend making your business a success.

Inside this issue:

President's Letter	2
Block Kids Picture	2
Southside Technical Center Information	2
NAWIC Anniversaries	2
Mark Your Calendar	3
Girls Can Too!	4
NAWIC Connection	4
EKU Construction Management Banquet	4
WIC Week	5
U.S. Census Info	6
National Officers	7
2010/11 Candidates	7
Committee Notes	7
NEF	8
Contact Page	9

R.S.V.P. INFORMATION

Where: Marriot Griffin Gate, 1800 Newtown Pike, Lexington

When: Thursday, March 18, 2010

5:30 p.m. – 6:00 p.m. Networking & Registration

6:00 p.m. Dinner

6:30 p.m. – Business Meeting

7:30 p.m. – Board Meeting

Cost: \$20.00 Members & Previous Guests. 1st time guests are FREE

Reservations required. Contact Susan Cox, scox@messer.com by March 16th

Remember, A Reservation Made Is A Reservation Paid.

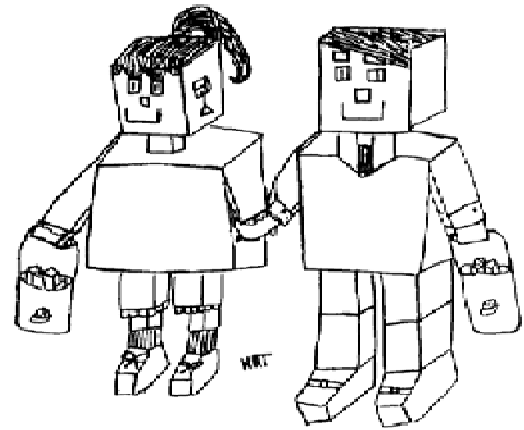
2 Letter from the President



There are flowers poking up through the ground at my house and there were a gazillion (which is a lot!) of birds flying around when I got home from work the other day and it was still light outside! That deserves some exclamation points. Mother Nature knows spring will be here soon.

For us Women in Construction week (better known as W.I.C. week) is here now. Plan on joining in on the FUN and the break we all deserve from the news the media seems to want to emphasize on high unemployment rates and businesses closing.

The luck of the Irish will be with us the week after W.I.C. and so will our next membership meeting. See you all then. Elaine



A huge Thank You to all the members who came out to support our 1st Block Kids event on Sat., Feb. 20th. Below is a picture of the group



SOUTHSIDE
TECHNICAL CENTER

FAYETTE
TECHNICAL CENTERS

EASTSIDE
TECHNICAL CENTER

"Relationships between the technical high school students and the health care professionals at Central Baptist Hospital benefit both groups... Support of these programs is another way our organization gives back to the community".
- Karen S. Hill, RN, MSN, FACHE
Vice President/Nurse Executive
Central Baptist Hospital

Thank you to Principal Daryn Morris of the Southside Technical Center for allowing our chapter to tour the school during our February meeting!

Mr. Morris said, "Thank you for having your group out to school tonight. We certainly enjoyed the opportunity to share, network and hopefully open some eyes in ways that you all can be beneficial to our school. Opportunities to volunteer in the school are endless and we welcome the opportunity to work with you all."

If anyone is interested in contacting Mr. Morris or becoming more involved in Southside's activities, please contact him at **Southside Technical Center, 1800 Harrodsburg Road, Lexington, KY 40504**, Phone: 859-381-3603, E-mail Daryn.Morris@fayette.kyschools.us

HAPPY NAWIC ANNIVERSARY

Celebrating their involvement in NAWIC!

Susan Bachner – 6 years Boo Blakey – 1 year
Grace Northcutt – 1 year Medearis Robertson – 3 years

MARK YOUR CALENDARS

Thursday, April 15, 2010 – Everything Old Is New Again

If you're a Fayette County resident or employed in Fayette County you may often wonder where all your school tax funds go. While it is used in many other ways a portion funds the construction processes of the school district. On April 15th, you'll have the opportunity to learn a bit about the process of a school addition and renovation from the beginning to the end. Hear from Fayette County District personnel how the decision to build new or renovate is made.



Learn from Ross Tarrant Architects the elements of design involved in the Arlington Elementary project. Enjoy an educational site tour with WS Construction, project General Contractor to both see and hear how it all comes together. Discuss project details with fellow NAWIC members whose companies have been actively involved in the project through subcontract agreements, services, and material supply. At the end of the night you'll be bragging about how much fun you had learning at elementary school...only this time there won't be recess or crayons involved!

Thursday, May 20, 2010 – Jobsite Tour @ Queen City Reprographics



Please join us at Queen City Reprographic's newest location in Lexington at 2456 Fortune Drive, Ste. 120 for a tour of their facility, hosted by one of our newest members, Bethany Ridiman. The below information is from QCR's website to give you a better idea of what services they offer. You can find out more by visiting www.qcrepro.com

"Our large format digital processes have launched Queen City Reprographics to the top of the reprographic market. By housing a broad spectrum of scanning, data management, and printing services under one roof, Queen City Reprographics is positioned to be the only reprographic source you need. Our data management services include collaboration tools as well as file archiving and sharing applications. Large or small, color or black and white, indoors and out- we can help. Everything from banners and signs, window or wall graphics, to manuals and binders can be created for you by Queen City Reprographics. We emphasize quality and efficiency by utilizing the latest digital printing technology coupled with broad and deep industry expertise. "

"Queen City Reprographics is positioned to be the only reprographic source you need. Our data management services include collaboration tools as well as file archiving and sharing applications. Large or small, color or black and white, indoors and out- we can help. Everything from banners and signs, window or wall graphics, to manuals and binders can be created for you by Queen City Reprographics. We emphasize quality and efficiency by utilizing the latest digital printing technology coupled with broad and deep industry expertise."

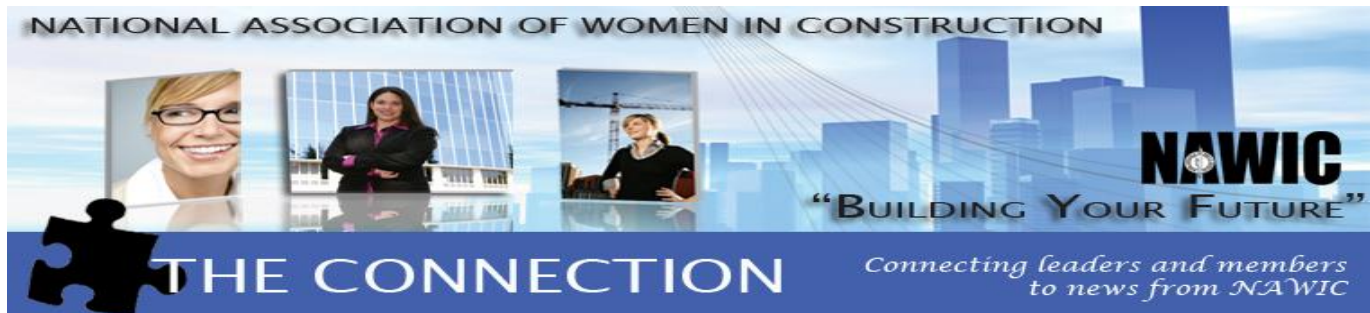
Other Dates to Remember:

- Ø March 7-13,2010 WIC WEEK & Spring Social (see details on the following page!)
- Ø March 11th, Happy Hour @ Cheapside 5p.m
- Ø March 13th, 2:30 pm Southland Bowling Lanes – Big Brothers/Big Sisters Bowl For Kids Sake
- Ø March 18th, Nominations for Crystal Vision Awards due
- Ø April 9-11th, Forum 2010 Akron, OH
- Ø April 22nd, ECU Construction Management Banquet
- Ø April 24th – Miss Fix-it #4 (aka MFI4)
- Ø JUNE 2010 – Summer Social (Date & location TBD)
- Ø August 30th – Sept.6th – 55th National Convention, Louisville, KY



Girls Can Too!

Helping girls explore and experience careers in construction is the goal of the "Girls Can Too". Created through a partnership of our NAWIC chapter #367 and Bluegrass Community & Technical College (BCTC) the program is targeted at middle and high school girls. The program is free and open to the public will take place on BCTC Leestown Campus, 164 Opportunity Way in Lexington on the second Saturday of each month from 10:00 a.m.-12:00 p.m. Projects and take home kits are made available to the girls through a grant from the American Association of University Women. Calling all NAWIC volunteers!! Please let Laura Lynch know if you are able to participate in this Spring's Girls Can Too project. Her schedule will fill up fast; now is the time to share your knowledge with girls in the community so they can choose a career in construction! You can contact Laura at laura.lynch@kctcs.edu



Build Your Bridge to the Future at Forum 2010

Your region's Annual Forum is coming to a city near you this spring, and you will not want to miss all that your region has in store for you to grow. Annual Forums offer educational seminars, solutions for your business and career, networking and more. And don't forget the fun! Forums will be held all over the country, so don't miss the opportunity to build your bridge to the future at a NAWIC Forum near you. Be on the lookout for the Forum Preview to arrive in your inbox soon. **See additional information on Region 4's Forum on the following pages!!**



RECOGNITION BANQUET

Dear Friends of ECU Construction Management,
Please mark your calendar for April 22, 2010 for the Fourth Annual "Construction Management Banquet". We look forward to celebrating with you by honoring outstanding Construction Management Program champions and students for their leadership and achievements. The following honors will be recognized: Outstanding Senior, Distinguished Alumnus, Outstanding Woman in Construction, and Hall of Fame Constructor. ECU highlights for the evening will include an overview of the Student Contractor Association activities and recognition of our 24 graduates for 2009-2010. Please contact Christine Parsons if interested in attending!!

Thursday, April 22nd 2010
Arlington Mule Barn, 1510 Lexington Road, Richmond, KY
6:00pm – Meet and Greet
7:00pm – Dinner and Awards Ceremony

WIC WEEK

M
a
r
c
h

	Monday	Tuesday	Wednesday	Thursday	Friday
Theme	Natural	Admirable	Witty	Inspiring	Crafty
Color	Green	Red	Orange	(Sky) Blue	Violet
Award	<i>Natural Leader</i>	<i>Secretly Admired</i>	<i>Winsomely Witty</i>	<i>Inspirational Spirit</i>	<i>Creatively Crafty</i>
Prize	"Natural Goodness"	"Something Sweet"	"Something Ridiculous"	Inspirations	"Crafty Cat"
Event		Community Center Donations		5pm @ Cheapside Happy Hour	

Now you have all the details, let me explain what they mean:

Theme: Each day the morning reflections, awards, prizes and possible activity will revolve around a common theme. These ideas came from our very own NAWIC members last autumn as I searched for ideas to put in the new brochure. These themes embody who we are and what makes us AMAZING year round – not just WIC Week!

Color: I like color. I also find that colors unite people. Have you ever seen an entire basketball arena in UK Blue? It's a pretty powerful sight! Well, we may not be able to be together all week long, but through a red pair of earrings on Tuesday and a violet sweater on Friday, we can be a little more connected. Plus, it's just happy!

Awards: Look to your left. Look to your right. The women around you are INCREDIBLE and they deserve some major props. Although each of us displays the characteristic themes of the week, some women just seem to naturally achieve gold level status and then draw these qualities out of others. I need you to help me identify the outstanding ladies!

Please vote for up to 3 people for each award listed and e-mail it to gnorthcutt@messer.com by February 28th. Don't worry, I'll send an e-mail to remind you. J

Inspirations: We rely on each other so often for support in our daily lives. I would like your inspirational contributions for a fantastic prize I'm working on. I'm looking for pictures, stories, quotes, or anecdotes that make you smile. They can be true or internet scavenged, uplifting, heartwarming, thought provoking, or wet-your-pants funny. I want them all and trust me, you want me to have them too! Again, e-mail to gnorthcutt@messer.com.

Prizes: Let's just say I've had a lot of fun and you will love this year's prizes. How do you get the prizes? By sending me nominations and inspirations!

Your name goes in the hat for every award you nominate for (up to 5) and for every inspiration you send (up to 3). I'll put all the names in a hat at the start of WIC Week and start drawing to win our super fun and mildly bizarre prizes!

Any Questions? Let's Get Ready to Celebrate WIC Week 2010!

7

-

1

3

2

0

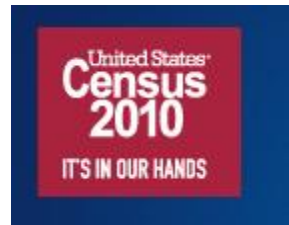
1

0

2010 Census to Begin

THIS IS PRETTY BASIC ADVICE

Be Cautious About Giving Info to Census Workers by Susan Johnson



With the U.S. Census process beginning, the Better Business Bureau (BBB) advises people to be cooperative, but cautious, so as not to become a victim of fraud or identity theft. The first phase of the 2010 U.S. Census is under way as workers have begun verifying the addresses of households across the country. Eventually, more than 140,000 U.S. Census workers will count every person in the United States and will gather information about every person living at each address including name, age, gender, race, and other relevant data.

The big question is - how do you tell the difference between a U.S. Census worker and a con artist? BBB offers the following advice:

◆ If a U.S. Census worker knocks on your door, they will have a badge, a handheld device, a Census Bureau canvas bag, and a confidentiality notice. Ask to see their identification and their badge before answering their questions. However, you should never invite anyone you don't know into your home.

◆ Census workers are currently only knocking on doors to verify address information. Do NOT give your Social Security number, credit card or banking information to anyone, even if they claim they need it for the U.S. Census.

◆ REMEMBER, NO MATTER WHAT THEY ASK, YOU REALLY ONLY NEED TO TELL THEM HOW MANY PEOPLE LIVE AT YOUR ADDRESS

◆ While the Census Bureau might ask for basic financial information, such as a salary range, YOU DON'T HAVE TO ANSWER ANYTHING AT ALL ABOUT YOUR FINANCIAL SITUATION. The Census Bureau will not ask for Social Security, bank account, or credit card numbers, nor will employees solicit donations. Any one asking for that information is NOT with the Census Bureau.

AND REMEMBER, THE CENSUS BUREAU HAS DECIDED NOT TO WORK WITH ACORN ON GATHERING THIS INFORMATION. No Acorn worker should approach you saying he/she is with the Census Bureau.

Eventually, Census workers may contact you by telephone, mail or in person at home. However, the Census Bureau will not contact you by E-mail, so be on the lookout for Email scams impersonating the Census.

Never click on a link or open any attachments in an E-mail that are supposedly from the U.S. Census Bureau

For more advice on avoiding identity theft and fraud, visit www.bbb.org



Nawic national officers Officer candidates 2010/11

President – Robin Fulton-Meyer, CIT

On Your Case

Robinmeyer@verizon.net

President-Elect – Debbie Gregoire, CIT

The Brewer-Garret Co.

dgregoire@brewer-garrett.com

Vice-President – Judy DeWeese, CIT

Mauze Construction Group

judenawic@aol.com

Secretary – Shirley Horne, CIT

Hay Construction Company, Inc.

shome@hayconstruction.com

Treasurer – Cindy Johnsen, CDS, CIT

Granite Construction Company

Cindy.johnsen@gcinc.com

Immediate Past President – Pat McDonald, CCA, CIT

STI Trucking

nawicpat@sbcglobal.net

Region 4 Director – Jan Sullivan, CCA, CDS, CIT

Garmong Construction Services

jpsu@verizon.net

President-Elect - Judy DeWeese, CIT

Vice-President – Shirley Horne, CIT

Cindy Johnsen, CDS, CIT

Secretary – Linda Champlin-Frank, CIT

Riki F. Lovejoy

Treasurer – Yasmine A. Branden, CCA

Janet P. Sullivan, CCA, CDS, CIT



COMMITTEE NOTES

Membership: Chair – Christine Parsons. Goals – triple the membership over the next five years!! That means we ALL need to recruit, recruit, recruit!! Invite women you work with to the next meeting!! Membership is currently at 30.

**You can invite potential member guests to attend our meetings at no cost again this year, so invite those women not yet involved in NAWIC and we'll enhance their success too. The more members we have, the more opportunity there is to learn from each other.

PR/Marketing: Chair – Susan Cox. Goals – get our name out there as much as possible!! Do you belong to another organization that we could trade a newsletter page with? Do you have marketing ideas? Send them to Susan right away!!

Construction Profession & Education: Chair – Stacia Sharff. Goals – provide educational & entertaining speakers/joint meetings/tours for our members every month. Send speaker ideas to Stacia & the CP&E committee right away!! Currently, the CP&E committee has speakers planned through May.

Ways & Means (aka MF14): Chairs – Mary Gail Engle & Stacia Sharff. Goals – FUNDRAISING Miss Fix-It #4 will be held April 24' 2010. If you are interested in helping the committee, please let Stacia or Mary Gail know.

Have you thought about pursuing a certification via NEF (NAWIC Education Foundation)? Below is information regarding all three certifications currently offered by NEF.



NAWIC Education Foundation



Educating the Construction Industry Today . . . and Tomorrow.



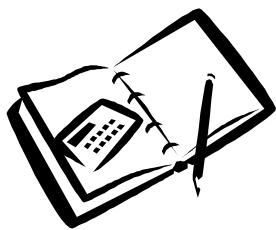
The **Construction Industry Technician (CIT)** is a self-paced, home study program. Passing an examination at the end of the course establishes mastery of the material and upon successful completion of the program, the participant will receive the **Construction Industry Technician Certifications**. This certification acknowledges the accomplishment of attaining a higher professional level in the construction industry.



The **Certified Construction Associate (CCA)** Program is an advanced, six-part, self study course in construction terminology, procedures and processes. NAWIC Education Foundation (NEF) requires the program be completed in three (3) years. Participants study at their own pace but must pass all six parts within three (3) years with 2 possible one year extensions. Extensions must be approved by the NEF Executive Committee. After successfully passing certification exams in all six parts, participants receive Certified Construction Associate certificates, pins and are entitled to use the letters, CCA after their names.



Construction Document Specialist (CDS). This book deals with interpreting information conveyed from the architect/engineer to the contractor by way of a legal document and with implementing that fundamental understanding. It discusses the many components of the legal agreement that binds the parties in a construction project: working drawings, specifications, and contract requirements of the Project Manual. A comprehensive understanding of the project's construction documents is necessary to prepare an estimate for submitting a bid and to prepare a project schedule for controlling costs after the contract is awarded.



CERTIFIED CONSTRUCTION BOOKKEEPER (CCB) This certification course will teach participants how to set up and operate a simple bookkeeping system for a construction company and work in both simple and complex bookkeeping systems as either a bookkeeper or under a bookkeeper in one part of the system. Whether you aspire to be an accounts payable clerk or a full charge bookkeeper, you will understand how to perform your job by learning about the whole system of bookkeeping.

Did you know that you can earn certifications from Clemson University through the NAWIC Education Foundation (NEF)? Adult education programs include Certified Construction Associate (CCA), Certified Construction Bookkeeper (CCB), Construction Document Specialist (CDS), and Construction Industry Technician (CIT). By taking these classes and passing the tests you can also earn CEU's. So how about it? Start expanding your knowledge today at www.nawiceducation.org and enhance your success!

About Our Organization...

Bluegrass Chapter #367
www.bgnawic.org

Region 4 – NAWIC's Core
www.nawic4.org

NAWIC National
www.nawic.org

**NAWIC Education
 Foundation (NEF)**
www.nawiceducation.org

**The Bluegrass
 Chapter is on
 Facebook!
 Join our group!**

Since its founding, NAWIC, an international non-profit organization, has grown to a membership of 5,500 women with more than 179 chapters. In its 51 years of service to its members, NAWIC has advanced the causes of all women in construction whose careers range from business ownership to the skilled trades. With almost 900,000 women working in construction today, the industry is becoming more accepting of their non-traditional roles

NAWIC's objectives are:

- To unite for the mutual benefit of the women who are actively engaged in the various phases of the construction industry.
- To promote cooperation, fellowship and a better understanding among members of the Association.
- To promote education and contribute to the betterment of the construction industry.
- To encourage women to pursue and establish careers in the construction industry.
- To provide members an awareness of the legislative process and legislation as it relates to the construction industry.

Executive Board

President	Elaine Boyd	eboyd@clayingels.com
Vice-President	Stacia Sharff	stacia@masonstructure.com
Treasurer	Cindy Hiens	chiens@messer.com
Corresponding Sec.	Mary Gail Engle	mgengle@uky.edu
Recording Secretary	Grace Northcutt	gnorthcutt@messer.com
Director	Susan Cox	scox@messer.com
Director	Faye Miller	fmiller@bbandt.com
Director	Joan Markwell	joanemarkwell@yahoo.com
Membership Chair	Christine Parsons	parsons@parsonselectric.com
Finance Chair	Cindy Hiens	chiens@messer.com
C.P. & E Chair	Stacia Sharff	stacia@masonstructure.com
PR/Marketing Chair	Susan Cox	scox@messer.com
WIC Week	Grace Northcutt	gnorthcutt@messer.com
Newsletter Editor	Susan Cox	scox@messer.com

